



MTB Orienteering World Cup, Round 3 2023
U23 World MTBO Championships 2023



Team Officials' Meeting

FOR

Thursday, September 21nd

MIDDLE DISTANCE



Roll-call

Federation	Men	Women	Team Officials	Total
Australia	1			1
Austria	5		2	7
Bulgaria	2	3	1	6
Czechia	8	4	2	14
Denmark	3	3	2	8
Estonia	2	1	1	4
Finland	2	6	1	9
France	5	4	1	10
Germany	2	1		3
Great Britain	2	1		3
Italy	8	1	2	11
Lithuania	2	2		4
Poland	3		1	4
Portugal	1			1
Spain	4	2	1	7
Switzerland	4	2	1	7
United States	1			1
Sum	55	30	15	100

20-22/9/2023

ITALY - FOLGARIA



MTB Orienteering World Cup, Round 3 2023

U23 World MTBO Championships 2023



Officials

Event Director:

Fabrizio Boneccher

Competition Director:

Giuseppe Simoni

IOF Senior Event Adviser:

David Hlaváč, CZE

National Controller:

Giaime Origgi

Course Setters:

Ivan Gasperotti

IT & Sport Ident Manager:

Alessio Dalfollo

Speaker:

Stefano Galletti

JURY members:

Jan Cegielka, POL

Jiri Vransky, CZE

Clizia Zambiasi, ITA

20-22/9/2023

ITALY - FOLGARIA



MTB Orienteering World Cup, Round 3 2023
U23 World MTBO Championships 2023



Middle – Time schedule

Event office open (Gionghi Arena)	8:00-9:00
Event office open (Event Centre Folgaria)	19:00-20:00
Start quarantine open	7:30
Last entry into the quarantine zone	8:45
Start of the middle distance event	9:00
Flower Ceremony (Gionghi Arena)	13:30
Opening ceremony (Piazza. G. Marconi, Folgaria)	18:00
Prize giving ceremony (Piazza. G. Marconi, Folgaria)	18:30
Deadline for name entries – long	15:00
Team Officials' Meeting – long (Piazza. G. Marconi, Folgaria)	19:00-20:00

20-22/9/2023

ITALY - FOLGARIA



MTB Orienteering World Cup, Round 3 2023
U23 World MTBO Championships 2023



Middle – Logistics

Travelling to the quarantine zone – from Folgaria – direction Carbonare – Lavarone Gionghi
Respect embargoed areas.

Parking arena – GPS 45.9399753N, 11.2683639

Please, in the arena, follow the instructions from marshals.



It is not allowed to park anywhere else, only dedicated official parking areas are allowed.

Distance from parking to the Quarantine area: up to 70 m (walk)

Distance from parking to the finish arena: up to 40 m (walk)

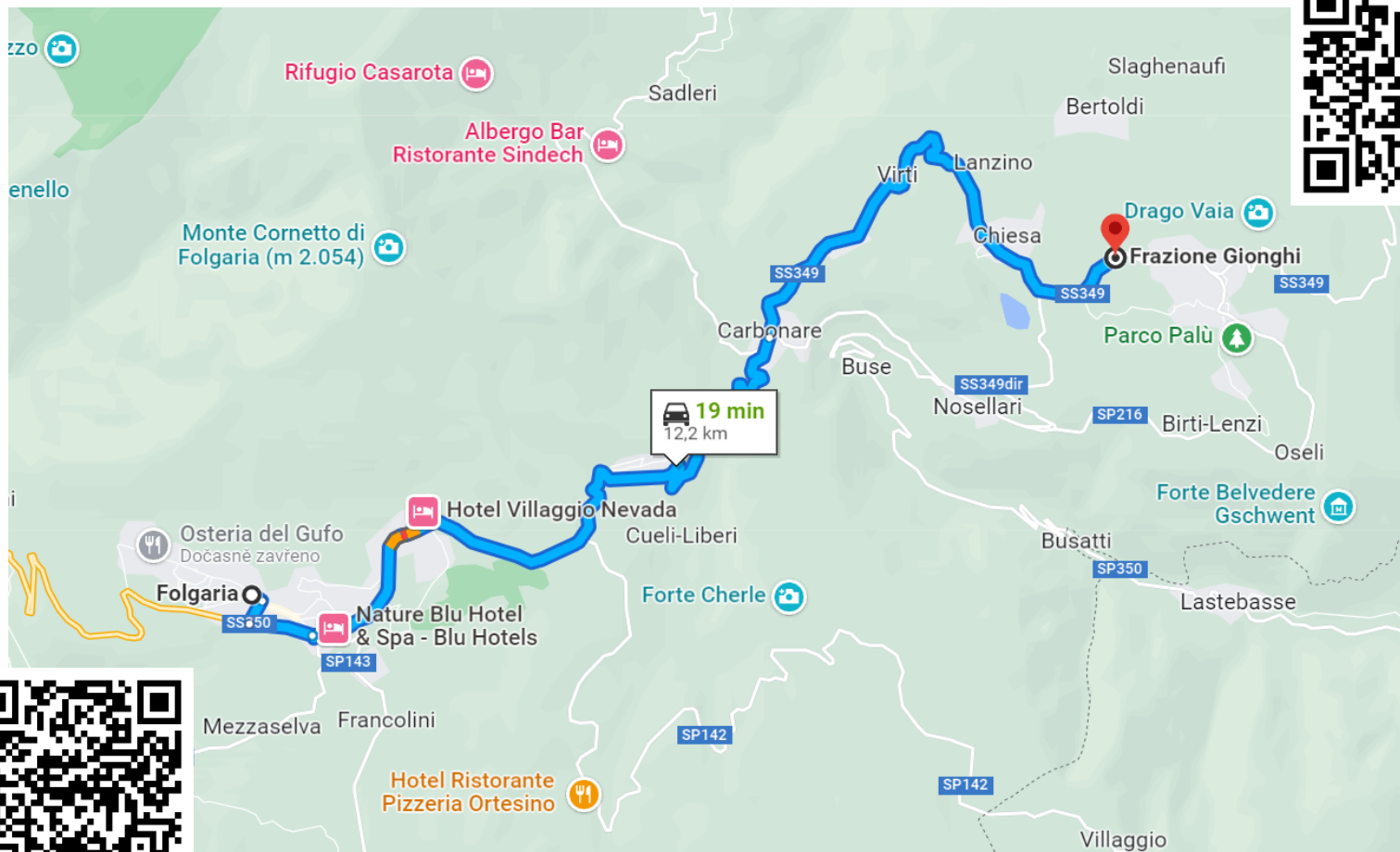
Competitors and officials must enter the quarantine zone before the relevant deadline time-limit; otherwise they will not be allowed to enter the quarantine.
All competitors must enter the quarantine zone before entering start.



MTB Orienteering World Cup, Round 3 2023
U23 World MTBO Championships 2023



Middle – Logistics

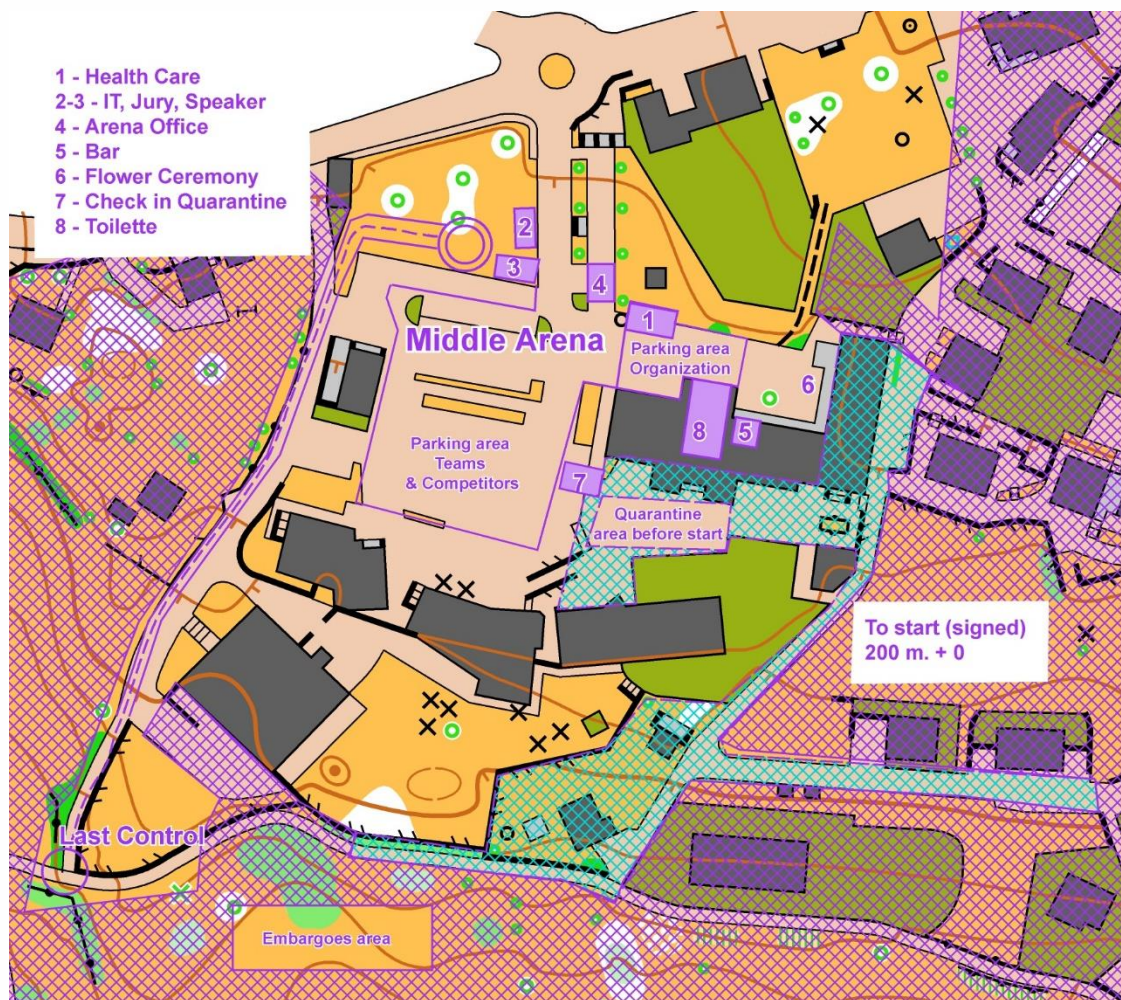


20-22/9/2023
ITALY - FOLGARIA

wmtbocup2023@gronlait.it



Middle – Logistics





Middle – Quarantine

Start quarantine:

Start quarantine open	7:30
Last entry into the quarantine zone	8:45

Warm-up area is a part of quarantine zone.

Quarantine facilities - toilets, refreshment (water), shelter in Palacongressi.

Prestart is situated in the SE part, path to the start triangle is marked by white/red ribbons.

Distance from Prestart to start corridors is 30m, +0m.

Before leaving prestart – CLEAR & CHECK & TEST your SIAC, all athletes will be asked to wear a GPS unit.

GPS units will be distributed in a quarantine zone on the Prestart. GPS unit must be worn in a special vest provided to each competitor in the quarantine zone or in own a special pocket on the back, which holds the unit in a vertical position.

GPS units must be returned in the finish area.

There will be no finish quarantine.



MTB Orienteering World Cup, Round 3 2023
U23 World MTBO Championships 2023



Middle – Quarantine

We kindly ask all competitors to mount their start bibs on their bikes or to know their actual start number before entering the quarantine zone.

Team bags:

Riders' clothes and other personal belongings stay in quarantine and they will be available after the last competitor has started – the quarantine will be lifted.

No bottles with refreshment to be delivered to the course.

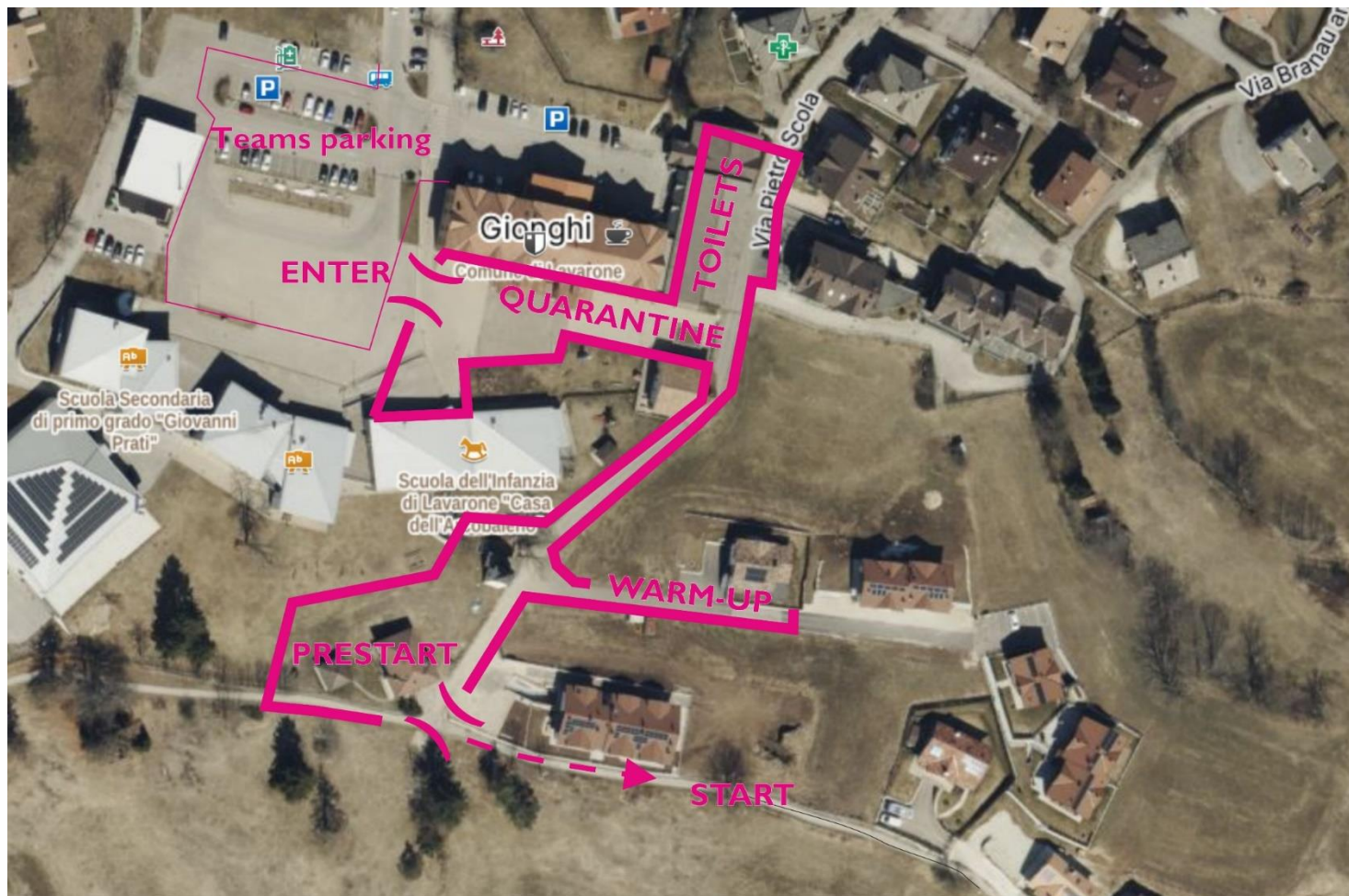
No material control in the course.



MTB Orienteering World Cup, Round 3 2023
U23 World MTBO Championships 2023



Middle – Quarantine detail





Middle – Quarantine detail

Competitors must not use or carry devices that can transmit or receive information, to or from a remote source, between entering the quarantine zone and reaching the finish in a race, unless the equipment is approved by the organiser.

GPS-enabled devices (watches, cycle computers etc.) can be carried provided that

- they have no map display
- they have no communication ability other than receiving GPS data
- they are not used for navigation purposes.

However, the organiser has the right to specifically forbid the use of such equipment.



MTB Orienteering World Cup, Round 3 2023
U23 World MTBO Championships 2023



Middle – Courses and maps

	Length		Controls	Climb	Estimated winning time
M	12,9 km	19,6 km	22	360 m	50-55 minutes
W	8,9 km	13,3 km	17	300 m	50-55 minutes

Time limit: 150 minutes

Map scale: 1:10000, contours 5m, waterproof paper

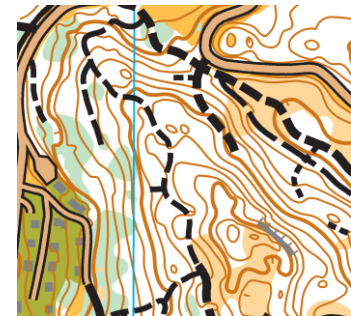
Map size: A3 (42 x 30 cm)

Map specs: ISMTBOM 2022, revision 8/2023

No map turn

No refreshment during the race

Map example:





MTB Orienteering World Cup, Round 3 2023
U23 World MTBO Championships 2023



Middle – Courses and maps

All courses contain mandatory routes, marked by white/red ribbons or a corridor. In the map the mandatory route is marked by symbol 707 Marked route (purple).

Some minor paths that are difficult to recognize in the terrain will also be marked with yellow ribbons.

There is a new path created during harvesting in the forest which is not in the map.



Middle – Punching & backup

Punching system – SportIdent SIAC, Long range
Backup punching system – SportIdent contact
Backup for competitors – second SIAC

Recommendation from SportIdent:
Keep approx 30 cm distance between cards,
when you wear two SIACs to keep maximum
reliability, if possible.

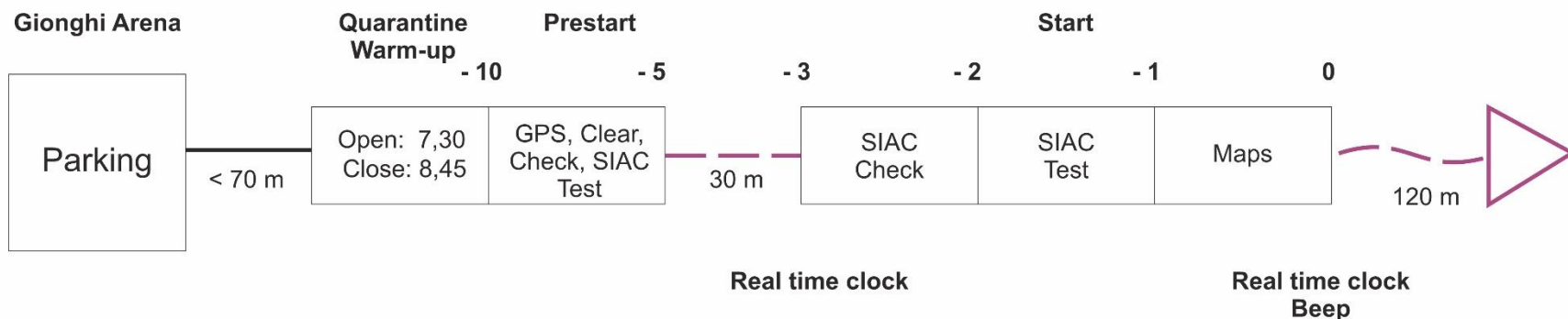


CONTROLS





Middle – Starting procedure





MTB Orienteering World Cup, Round 3 2023
U23 World MTBO Championships 2023








Middle – Restriction

Off-track riding (including running and walking with the bike) is prohibited during all races, except map symbols where riding is permitted!

Also cutting is strictly prohibited

Middle – Restriction

The following symbols (ISMTBOM 2022) will be used to show where off-track riding (or movement) is permitted.

<p>501 Paved area (tarmac or gravel)</p>		<p>827 Narrow ride, permitted to ride: fast riding</p>		<p>830 Narrow ride, permitted to ride: very slow riding</p>	
<p>824 Open land, permitted to ride</p>		<p>829 Narrow ride, permitted to ride: slow riding</p>		<p>All other off-track areas are forbidden!</p>	



MTB Orienteering World Cup, Round 3 2023
U23 World MTBO Championships 2023



Middle – Safety

Courses outside villages are crossing some roads or the riders will ride on these roads. Reduced car traffic is possible. There will be marshals in most critical places, but generally riders are asked to follow traffic rules. Riders DO NOT HAVE absolute priority in the traffic.

The residential area will not be closed for the traffic during the race (reduced speed only and marshals are there), there might be some cars slowly moving which might become an unexpected obstacle.

Please watch out for pedestrians, mushroom pickers and tourists.



MTB Orienteering World Cup, Round 3 2023
U23 World MTBO Championships 2023



Middle – Doping

Please read AD information given in Bulletin #4.

Call for AD testing may happen any time.



MTB Orienteering World Cup, Round 3 2023
U23 World MTBO Championships 2023



Middle – Other

Starting bib

Will be given out to each competitor for each discipline.

The starting bib has to be placed in the front of the bike, tapes to fit the numbers will be distributed with bibs.

Complaints

Complaints may only be made by accredited team officials or competitors, at the finish as soon as possible after the incident or at the latest at **13:00**. Complaints received after this limit will be considered if there are valid exceptional circumstances (described in the complaint).

Any complaints shall be made in writing to the organizer – in that case please contact staff in the finish.



MTB Orienteering World Cup, Round 3 2023
U23 World MTBO Championships 2023



Middle – Other

Prize giving ceremony

Flower Ceremony will held at the Gionghi arena at 13:30

Prize giving ceremony will be organized at the Folgaria, Piazza G. Marconi at 18:30.

There will be awarded first 6 best placed competitors in each category of World Cup and U23 World Championships .

In line with IOF rules podium finishers are requested to dress in team uniforms.



Middle – Other

Hourly weather forecast for Gionghi served by yr.no

07		17°	1.2	1 ↗	Light air from south west
08		18°	0.2	1 ↑	Light air from south
09		18°	0.1	2 ↑	Light breeze from south
10		19°	0.2	2 ↑	Light breeze from south
11		20°	0.1	2 ↑	Light breeze from south
12		21°	0.3	3 ↑	Light breeze from south
13		22°	0.7	3 ↑	Light breeze from south
14		22°	0.2	3 ↗	Light breeze from south west
15		22°		3 ↑	Light breeze from south
16		22°		4 ↑	Gentle breeze from south
17		22°		3 ↑	Light breeze from south
18		21°		3 ↑	Light breeze from south

20-22/9/2023

ITALY - FOLGARIA



MTB Orienteering World Cup, Round 3 2023
U23 World MTBO Championships 2023



Start draw for Long

Deadline for name and primary SI card number for Long distance entries is at 15:00 one day prior to the race day in IOF Eventor = 21.9., 15:00.



MTB Orienteering World Cup, Round 3 2023
U23 World MTBO Championships 2023



QUESTIONS?



MTB Orienteering World Cup, Round 3 2023
U23 World MTBO Championships 2023



THANK YOU & GOOD LUCK!